

FCC 2023 Survey Results Message



Process

- **Survey Congregations**

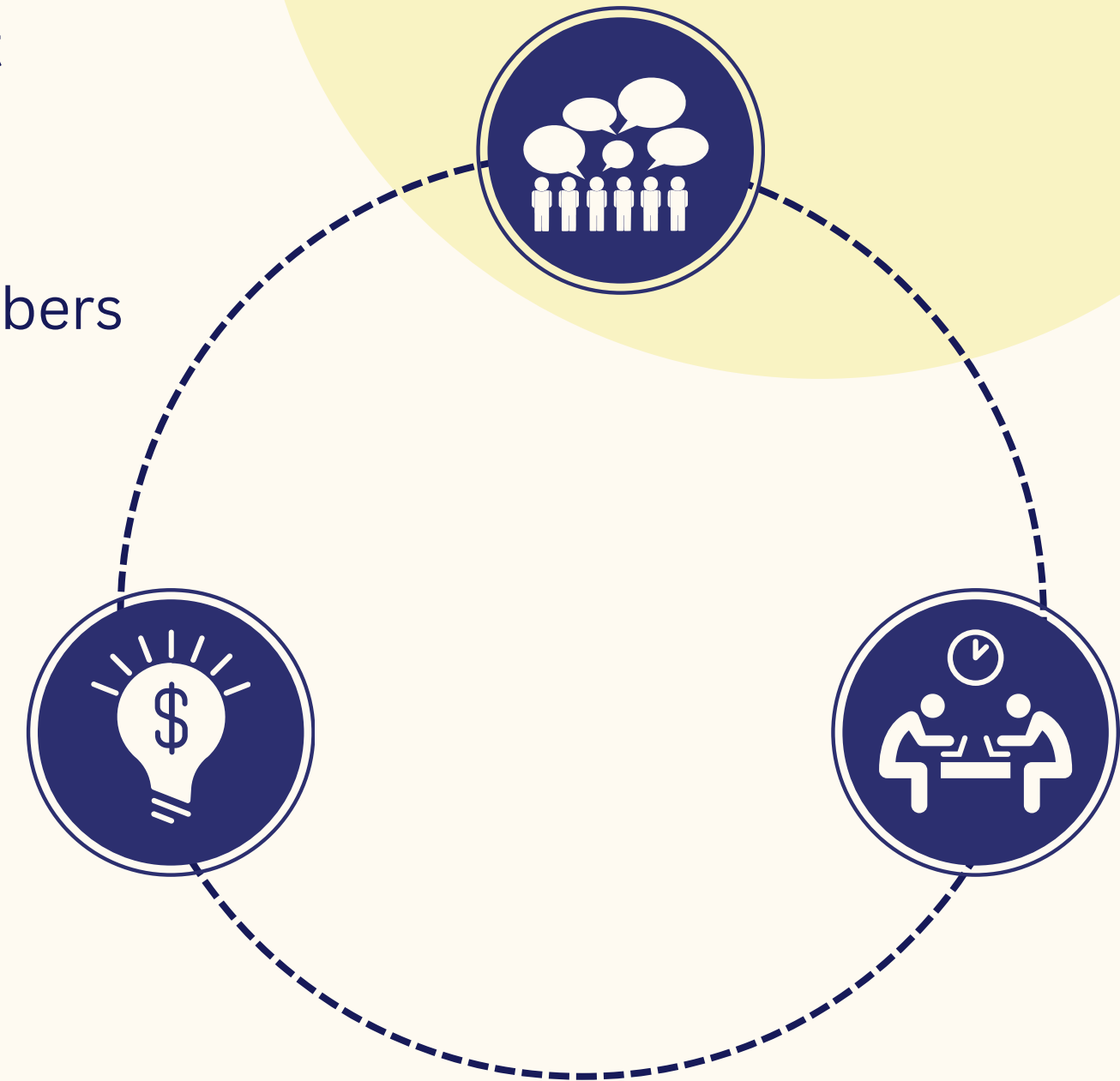
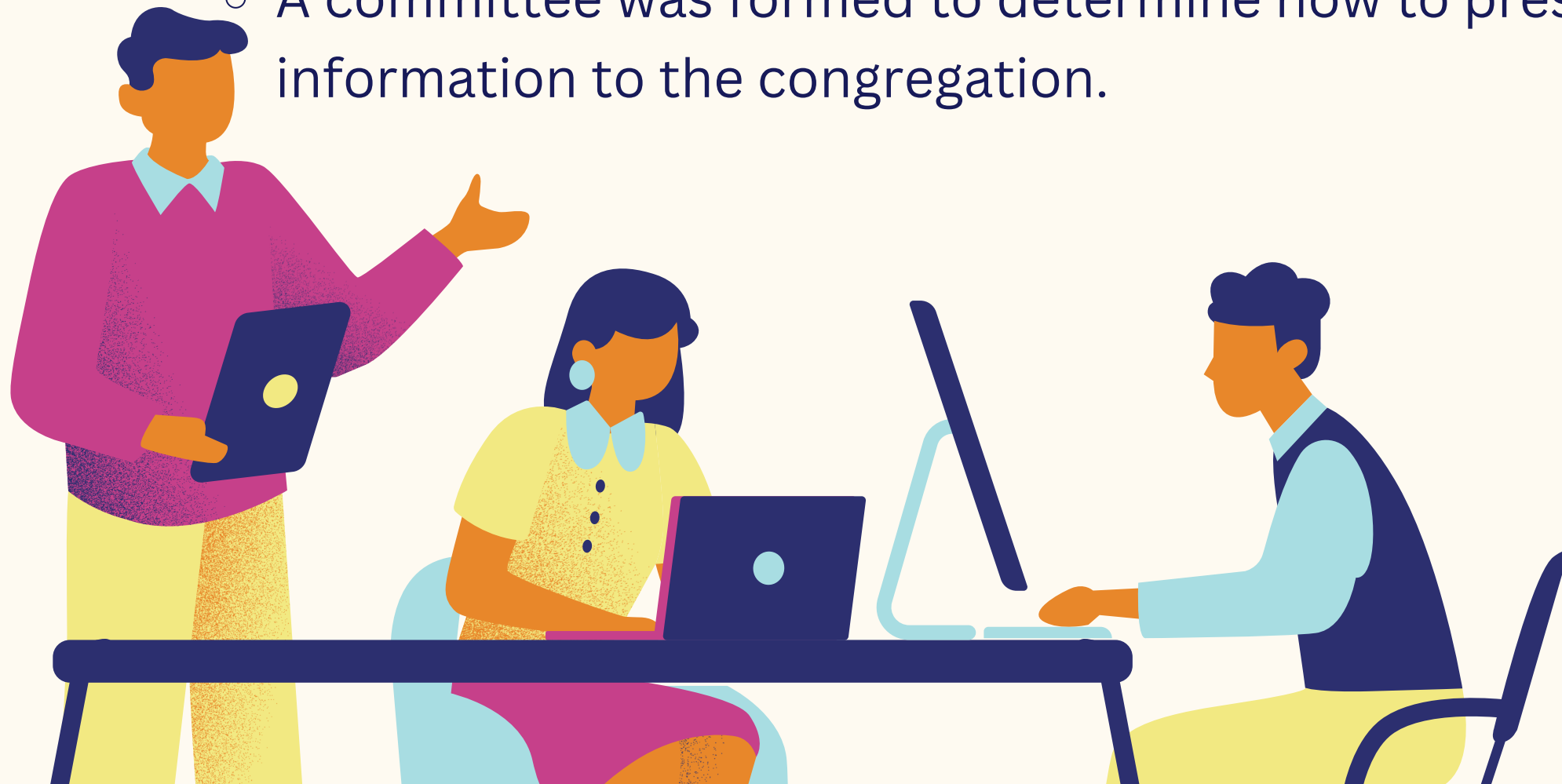
- Each member of the congregation was given the option to complete the survey. Questions were answered on a scale of 5-1 of most importance.

- **Small Group Discussions**

- Several small group discussions were scheduled to allow members to discuss what is important to them and the church.

- **Interpreting the results**

- A committee was formed to determine how to present this information to the congregation.



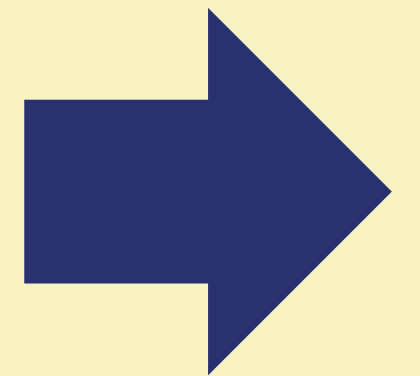
Marthas and Marys



First Christian Church Disciples of Christ Minneapolis is a church of Marthas (service) and Marys (spiritual growth) who value worship and preaching that is relevant to today's world, welcoming all individuals to worship and the communion table. Come and be fed and reach out and be of service. First Christian values the hybrid worship format of in-person and online spaces.

Survey Categories

1. Spiritual Growth & Fellowship
2. Spiritual Care & Advocacy
3. Outreach
4. Worship
5. SpringHouse
6. Logistics



Vision & Mission Statements

Alliteration of the 5 Rs

We used FCC's vision & mission statements to create these couplings to capture the Mary/Martha focus; the advocacy and outreach; the worship and preaching; and inclusiveness; etc. that are emphasized in the survey while recognizing we respect and embrace all of God's creation.



Reflect & Resonate

[Spiritual Growth and Fellowship / Spiritual Care categories]

Reach Out & Raise Awareness

[Advocacy and Outreach categories from the survey]

Respect & Receive

[This was not a survey category, but a pervasive theme that ran through the survey categories and is a part of our Mission Statement]

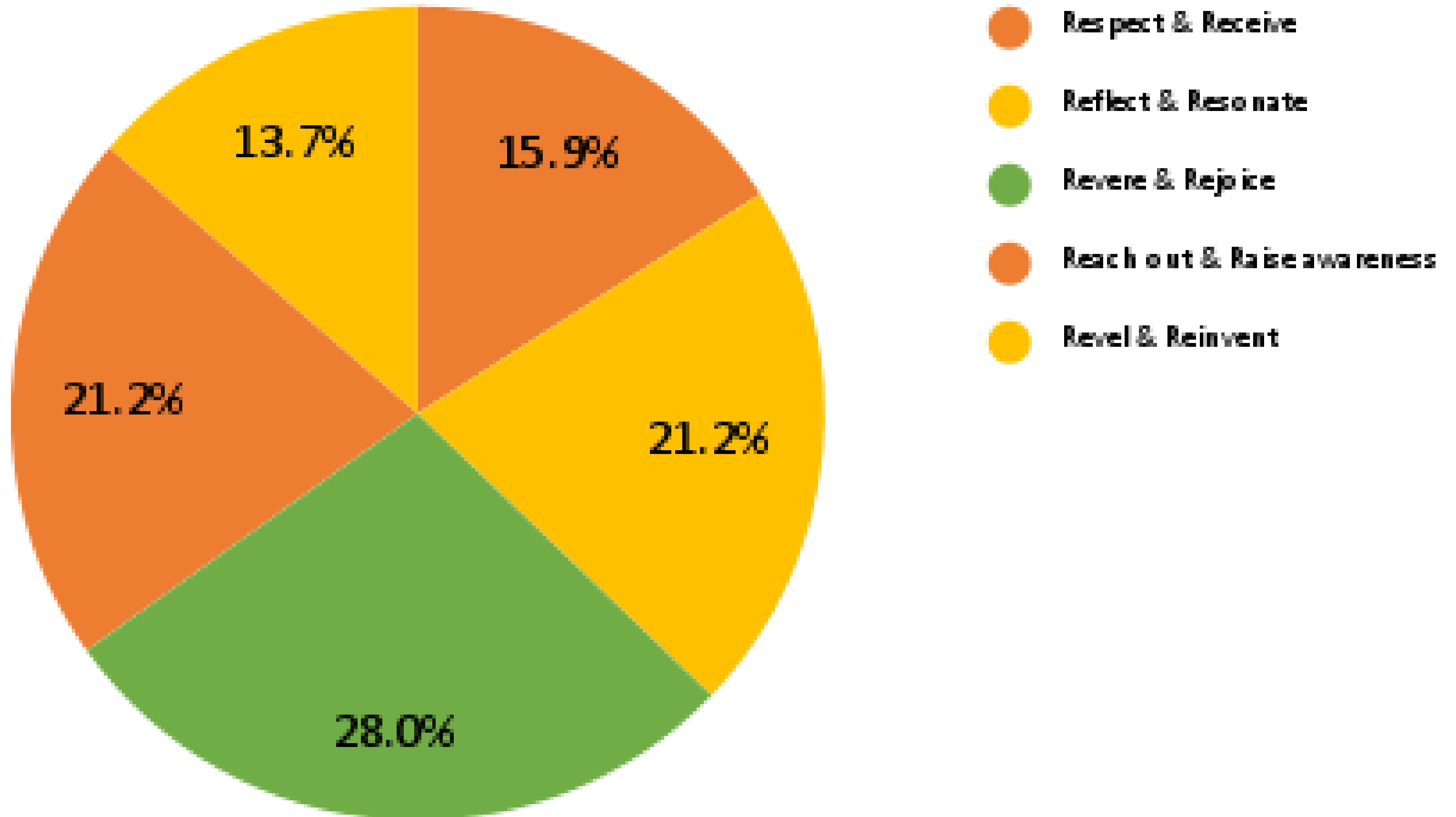
Revel & Reinvent

[Springhouse category]

Revere & Rejoice

[Worship category from the survey]

5 R's Distribution



Overall Survey Results

Top 5 Scores

Bottom 5 Scores

Meetings conducted on Zoom	232
Bringing a message of Christ' radical, inclusive love to the world	229
A high quality, inviting live streamed worship	226
Welcoming worship space for in-person/on-site worship	219
Streaming our worship services at home, instead of coming to Springhouse	214

Joint worship in the park	140
FCC & friends Book Group	133
Small Group Bible Study	131
Worship services based on themed worship series	123
Men's Fellowship	110

Highest Score: 232
Lowest Score: 110
Median: 171



Respect & Receive

As Christ's ambassadors, WE
"RESPECT" God and God's
creation and WE

"RECEIVE" all God's children by
welcoming, affirming and
embracing all
individuals of any background,
ability, economic status,
ethnicity, culture, race,
gender identity or sexual
orientation, including people of
all identities without
reservation in full fellowship and
leadership in our church.

Universal Communication	232
Bringing a message of Christ's radical, inclusive love to the world	229
A commitment to diversity in our worship, leadership, and community involvement	213
A commitment to recognizing and dismantling white supremacy	207
Participation in Pride and LGBTQ+ youth events	189
Social justice education online (such as the Action Project, Voice 2022, regional programs)	171
Pastoral staff representing us at protests, rallies and at the State capitol	154



All items

Reflect & Resonate

Like Mary, WE “**REFLECT**” and WE “**RESONATE**” on God’s word honoring freedom of belief, celebrating our differences and being united by Christ while we listen, share, nurture and play in fellowship with each other.



Emergency care support by pastoral staff	202
Fellowship gatherings/activities for the whole church, such as sabbatical activities	197
Disciples camps for children & youth	192
Care visits by pastoral staff	174
Pastoral counseling with pastoral staff	164
Pastoral staff’s leadership in regional and national disciples work	164
Online coffee hours/happy hours	157
Adult education	156
Celebrating long-term memberships, birthdays and anniversaries	155
Women’s fellowship	150
Care visits by elders	147

Reflect & Resonate

Like Mary, WE “**REFLECT**” and WE “**RESONATE**” on God’s word honoring freedom of belief, celebrating our differences and being united by Christ while we listen, share, nurture and play in fellowship with each other.



Top 3

Emergency care support by pastoral staff	202
Fellowship gatherings/activities for the whole church, such as sabbatical activities	197
Disciples camps for children & youth	192

Bottom 3

Celebrating long-term memberships, birthdays and anniversaries	155
Women’s fellowship	150
Care visits by elders	147

All Items

Revere & Rejoice

As disciples, WE “**REVERE**” God through worship, prayer, ministering to each other and the body of Christ, and WE “**REJOICE**” at its impact.



A high quality, inviting live streamed worship	226
Welcoming worship space for in-person/on-site worship	219
Streaming our worship services at home, instead of coming to Springhouse	214
Worship service elements that make the bible applicable for today's world	203
Worship service elements that make the bible relevant for your life.	199
Worshipping in the sanctuary in community with other people	198
Lay involvement in worship service planning	197
Worship music provided by our members through choirs and handbells	196
Worship music provided by paid professionals	175
Special guest musicians (brass band, Dixieland band, jazz band...)	169
Children's sermon, activity table, Sunday school	167
Ability to attend our live-streamed worship in small groups, outside of SpringHouse	152
Worship services based on themed worship series	123

Revere & Rejoice

As disciples, WE
“**REVERE**” God through
worship, prayer,
ministering to each
other and the body of
Christ, and WE
“**REJOICE**” at its impact.



Top 3

A high quality, inviting live streamed worship	226
Welcoming worship space for in-person/on-site worship	219
Streaming our worship services at home, instead of coming to Springhouse	214

Bottom 3

Children’s sermon, activity table, Sunday school	167
Ability to attend our live-streamed worship in small groups, outside of SpringHouse	152
Worship services based on themed worship series	123

Reach out & Raise Awareness

Like Martha, who sought to be of service, WE “**REACH OUT**” as disciples of Jesus Christ who actively care for people by serving the local and global community, especially where there is hunger, suffering and brokenness; and WE “**RAISE AWARENESS**” by advocating for others and bringing the message of Christ’s radical inclusive love to the world.

All Items

Hands-on outreach projects (Every Meal, sandwich making, Bags of Grace, etc.)	205
Our visibility to the community in new ways, as well as our website and a social media presence	203
Special outreach collections (food, school supplies, clothing and bedding)	199
A percentage of our church budget (tithe) devoted to outreach giving	199
Participation in Pride and LGBTQ+ youth events	189
Social justice education online (such as The Action Project Voices 2022, regional programs)	171
Servant trips (domestic/international)	161
Pastoral staff representing us at protests, rallies and at the State capitol	154
FCC & Friends Book Group	133
Small Group Bible Study	131
Men's Fellowship	110



Reach out & Raise Awareness

Like Martha, who sought to be of service, WE “**REACH**

OUT” as disciples of

Jesus Christ who actively care for people by serving the local and global

community, especially where there is hunger, suffering and brokenness; and WE

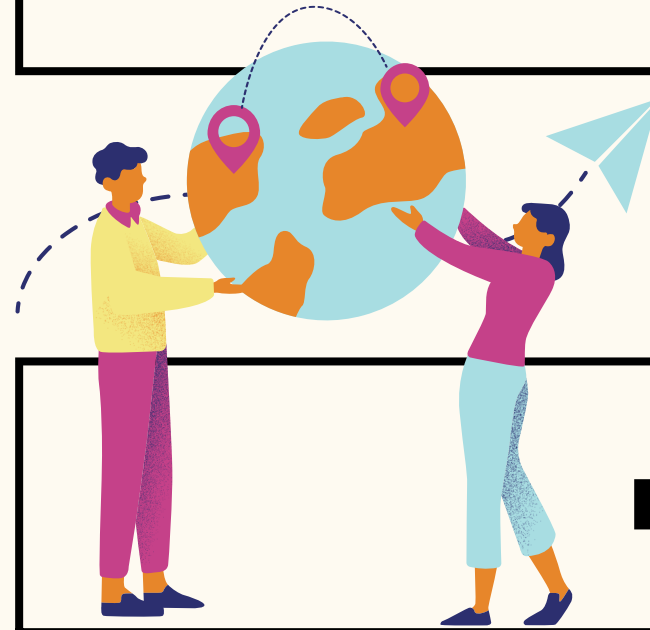
“**RAISE AWARENESS**” by

advocating for others and bringing the message of

Christ’s radical inclusive love to the world.

Top 3

Hands-on outreach projects (Every Meal, sandwich making, Bags of Grace, etc.)	205
Our visibility to the community in new ways, as well as our website and a social media presence	203
Special outreach collections (food, school supplies, clothing and bedding)	199



Bottom 3

FCC & Friends Book Group	133
Small Group Bible Study	131
Men's Fellowship	110

Reinvent and Revel

Like Jesus, WE “**REINVENT**” and WE “**REVEL**” in what it means to be in ecumenical ministry and mission through our shared worship and community spaces at SpringHouse Ministry Center.



All Items

Shared children's and youth ministries with other SpringHouse congregations	195
Parking near the church	187
Shared activities with other SpringHouse congregations	174
Share fellowship hour with other SpringHouse churches	172
Creative, new small group fellowship opportunities	165
Joint worship services at SpringHouse	155
Driving distance to/from church for members and visitors	150
Joint worship in the park	140

Reinvent and Revel

Like Jesus, WE “**REINVENT**” and WE “**REVEL**” in what it means to be in ecumenical ministry and mission through our shared worship and community spaces at SpringHouse Ministry Center.



Top 3

Shared children’s and youth ministries with other SpringHouse congregations	195
Parking near the church	187
Shared activities with other SpringHouse congregations	174

Bottom 3

Joint worship services at SpringHouse	155
Driving distance to/from church for members and visitors	150
Joint worship in the park	140

Vision & Mission Statements

Alliteration of the 5 Rs

We used FCC's vision & mission statements to create these couplings to capture the Mary/Martha focus; the advocacy and outreach; the worship and preaching; and inclusiveness; etc. that are emphasized in the survey while recognizing we respect and embrace all of God's creation.



Reflect & Resonate

Like Mary, WE **"REFLECT"** and WE **"RESONATE"** on God's word honoring freedom of belief, celebrating our differences and being united by Christ while we listen, share, nurture and play in fellowship with each other.

Reach Out & Raise Awareness

Like Martha, who sought to be of service, WE **"REACH OUT"** as disciples of Jesus Christ who actively care for people by serving the local and global community, especially where there is hunger, suffering and brokenness; and WE **"RAISE AWARENESS"** by advocating for others and bringing the message of Christ's radical inclusive love to the world.

Respect & Receive

As Christ's ambassadors, WE **"RESPECT"** God and God's creation and WE **"RECEIVE"** all God's children by welcoming, affirming and embracing all individuals of any background, ability, economic status, ethnicity, culture, race, gender identity or sexual orientation, including people of all identities without reservation in full fellowship and leadership in our church.

Reinvent & Revel

Like Jesus, WE **"REINVENT"** and WE **"REVEL"** in what it means to be in ecumenical ministry and mission through our shared worship and community spaces at SpringHouse Ministry Center.

Revere and Rejoice

As disciples, WE **"REVERE"** God through worship, prayer, ministering to each other and the body of Christ, and WE **"REJOICE"** at its impact.

5 Feedback questions



01.



What keeps you connected?

02.



What is FCC good at that others might be attracted to?

03.



What are some areas that you would like to see us grow and develop?

04.



What are things that are essential to who we are as FCC of Minneapolis?

05.



What other things haven't been named yet?

What keeps you connected?



Relationships	SpringHouse
Worship	Outreach opportunities
Core Disciples traditions	Love and acceptance
We hold space for future planning and connection	Women's fellowship and Book Group
Belonging to a community of faith connected in and through the People, Rituals, Traditions, and Service of our Church	

What is FCC
good at that
others might be
attracted to?



Overall Spirit	Technology
Push Boundaries	Sermons
Music	Bible
Tapping into our strengths	Outreach
Community	Growth

What are some areas that you would like to see us grow and develop?



Communication	Technology
Youth Ministries/ Children	Squiggle Space/ Sunday School
Music	Parking
Short term Bible Study	Worship
Community	Ritual
Getting our message out	Outreach

What are things that are essential to who we are as FCC of Minneapolis?



Outreach	Disciples' Values
Inclusivity	Families that go way back with other people weaving in;
Nurture and investment in our children and youth	Historical significance in the city
History (past) implies a future	Opportunities for Lay Leadership; everyone has areas where they agree/offer to participate

What other things haven't been named yet?



We need to be talking about/need awareness of our financial situation

We don't do a good job of presenting who we are or who we are not.

We should check in with people we haven't seen in awhile

SpringHouse has changed

Lost leadership - talented people getting older, not able to be so active

Collaboration and reflecting through our diverse traditions is a gift

ONE FINAL NOTE:

We are a hidden gem. How do we sparkle brightly to share the **Light**?



NEXT STEPS

- Use survey results to create a narrative budget
- Use Narrative Budget for decision making on Church budget



As we bring a message of Christ's
radical inclusive love to the world:

We Respect & Receive

We Reflect & Resonate

We Revere & Rejoice

We Reach Out & Raise Awareness

We Revel and Reinvent

**We as the Congregation of FCC
Minneapolis have spoken with
our hearts, souls, and minds
through the survey and
comments.**

